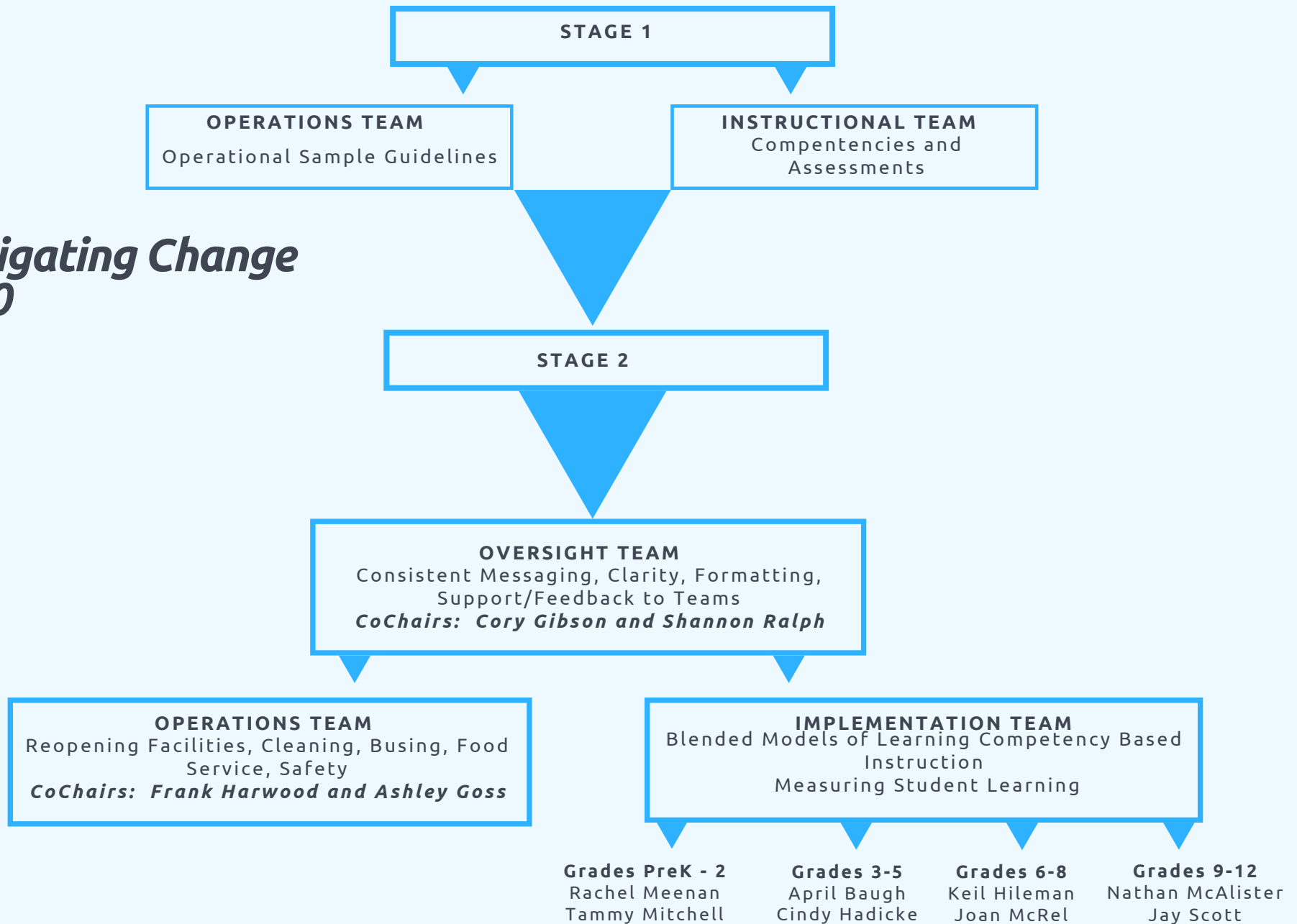


# Navigating Change 2020



# Oversight Team

Oversight Committee				
	Position	Name	Email	District
<b>Co-Chair</b>	Superintendent	Cory Gibson	<a href="mailto:cory.gibson@usd262.net">cory.gibson@usd262.net</a>	Valley Center USD 262
<b>Co-Chair</b>	Teacher	Shannon Ralph	<a href="mailto:ralphs@usd231.com">ralphs@usd231.com</a>	Gardner-Edgerton USD 231
	Superintendent	Steve Karlin	<a href="mailto:skarlin@gckschools.com">skarlin@gckschools.com</a>	Garden City USD 457
	Principal	Rick Rivera	<a href="mailto:rrivera@usd402.com">rrivera@usd402.com</a>	Augusta USD 402
	Principal	Jared Fuhrman	<a href="mailto:fruhrman@usd458.org">fruhrman@usd458.org</a>	Basehor-Linwood USD 458
	Curriculum Leader	Andi Giesen	<a href="mailto:agiesen@usd259.net">agiesen@usd259.net</a>	Wichita USD 259
	Teacher	Karen Tritt	<a href="mailto:ktritt@bluevalleyk12.org">ktritt@bluevalleyk12.org</a>	Blue Valley USD 229
	Service Centers	Kim Mauk	<a href="mailto:kim.mauk@swplains.org">kim.mauk@swplains.org</a>	SWPRSC
	Field Liaison	Cindy Couchman	<a href="mailto:ccouchman@usd313.org">ccouchman@usd313.org</a>	Buhler USD 313
	Field Liaison	Tabatha Rosproy	<a href="mailto:tabatha.rosproy@usd465.com">tabatha.rosproy@usd465.com</a>	Winfield USD 465
	Field Liaison	Dyane Smokorowski	<a href="mailto:smokorod@usd385.org">smokorod@usd385.org</a>	Andover USD 385
	KASB	Mark Tallman	<a href="mailto:mtallman@kasb.org">mtallman@kasb.org</a>	KASB
	KNEA	Marcus Baltzell	<a href="mailto:marcus.baltzell@knea.org">marcus.baltzell@knea.org</a>	KNEA
	Legislature	Valdenia Winn	<a href="mailto:valdenia.winn@house.ks.gov">valdenia.winn@house.ks.gov</a> ; <a href="mailto:wwinn1236@att.net">wwinn1236@att.net</a> ; <a href="mailto:wwinn@kckcc.edu">wwinn@kckcc.edu</a>	State Legislature
	KSDE Support	Mischel Miller	<a href="mailto:mmiller@ksde.org">mmiller@ksde.org</a>	KSDE
	KSDE Support	Denise Kahler	<a href="mailto:dkahler@ksde.org">dkahler@ksde.org</a>	KSDE
	KSDE Support	Laura Jurgensen	<a href="mailto:ljurgensen@ksde.org">ljurgensen@ksde.org</a>	KSDE
	KSDE Support	Kathi Grossenbacher	<a href="mailto:kgrossenbacher@ksde.org">kgrossenbacher@ksde.org</a>	KSDE
	KSDE Support	Craig Neuenswander	<a href="mailto:cneuenswander@ksde.org">cneuenswander@ksde.org</a>	KSDE
	KSDE Support	David Fernkopf	<a href="mailto:dfernkopf@ksde.org">dfernkopf@ksde.org</a>	KSDE
	KSDE Support	Ann Yates	<a href="mailto:ayates@ksde.org">ayates@ksde.org</a>	KSDE
	KSDE Support	Randy Watson	<a href="mailto:rwatson@ksde.org">rwatson@ksde.org</a>	KSDE
	KSDE Support	Brad Neuenswander	<a href="mailto:bneuenswander@ksde.org">bneuenswander@ksde.org</a>	KSDE
	KSDE Support	Doug Moeckel	<a href="mailto:dmoeckel@kasb.org">dmoeckel@kasb.org</a>	KSDE/KASB

# Implementation Team

PreK-2	Content	Name	Email	District
<b>Chair</b>	Tech	Rachel Meenen	<a href="mailto:rachel.meenen@usd267.com">rachel.meenen@usd267.com</a>	Renwick USD 267
	ELA	Traci Wood	<a href="mailto:woodt@usd385.org">woodt@usd385.org</a>	Andover USD 385
	ELA	Peggy Neufeld	<a href="mailto:pneufeld@usd313.org">pneufeld@usd313.org</a>	Buhler USD 313
	Science	Stacy Wolf	<a href="mailto:swolf@colbyeagles.org">swolf@colbyeagles.org</a>	Colby USD 315
	Science	Dwayne Taylor	<a href="mailto:dtaylor@frontenac249.org">dtaylor@frontenac249.org</a>	Frontenac USD 249
	Math	Nona Mason	<a href="mailto:nona.mason@usd352.org">nona.mason@usd352.org</a>	Goodland USD 352
	Math	Jessica Self	<a href="mailto:selfje@usd308.com">selfje@usd308.com</a>	Hutchinson USD 308
	SS	Lori Greenfield	<a href="mailto:lgreenfi@usd497.org">lgreenfi@usd497.org</a>	Lawrence USD 497
	SS	Kris Jenkins	<a href="mailto:kjenkins@usd309ks.org">kjenkins@usd309ks.org</a>	Nickerson USD 309
	SPED	Sharon Norden	<a href="mailto:snorden@usd260.com">snorden@usd260.com</a>	Derby USD 260
	SPED	Lee Hanson	<a href="mailto:lhanson@usd232.org">lhanson@usd232.org</a>	DeSoto USD 232
	PE	Kelly Guindon	<a href="mailto:kguindon@usd345.com">kguindon@usd345.com</a>	Seaman USD 345
	Art	Megan Clark	<a href="mailto:megclark@usd232.org">megclark@usd232.org</a>	DeSoto USD 232
	Art	AnnMarie Sahadeo	<a href="mailto:annasahadeo@smsd.org">annasahadeo@smsd.org</a>	Shawnee Mission USD 52
	ESL	Christie McBride	<a href="mailto:cmcbride1@usd259.net">cmcbride1@usd259.net</a>	Wichita USD 259
	Counselor	Chelsey Martin	<a href="mailto:martinch@cvilleschools.com">martinch@cvilleschools.com</a>	Coffeyville
	Counselor	Mallory Jacobs	<a href="mailto:mjacobs@tps501.org">mjacobs@tps501.org</a>	Topeka
	Music	Daichi Tadokoro	<a href="mailto:daichi.tadokoro@usd253.net">daichi.tadokoro@usd253.net</a>	Emporia USD 253
	Library Media	Erin Chapman	<a href="mailto:chapmane@turnerusd202.org">chapmane@turnerusd202.org</a>	Turner USD 202
	Principal	Stacey Green	<a href="mailto:sgreen@usd271.com">sgreen@usd271.com</a>	Stockton USD 271
	Supt	Heather Bohaty	<a href="mailto:hbohaty@usd260.com">hbohaty@usd260.com</a>	Derby USD 260
	Curric Director	Josh Synder	<a href="mailto:jsnyder@usd345.com">jsnyder@usd345.com</a>	Seaman USD 345
	KSDE	Tammy Mitchell	<a href="mailto:tmitchell@ksde.org">tmitchell@ksde.org</a>	KSDE
	Parent Engagement	Melissa Harlan	<a href="mailto:mharlan@usd386.net">mharlan@usd386.net</a>	
	BOE	Art Gutierrez	<a href="mailto:agutierr@emporia.edu">agutierr@emporia.edu</a>	Emporia USD 253
	Service Center	Gayla Lohfink	<a href="mailto:gayla.lohfink@swplains.org">gayla.lohfink@swplains.org</a>	SWPRSC
	State Board	Jean Clifford	<a href="mailto:jclifford@ksde.org">jclifford@ksde.org</a>	KSBE

# Implementation Team

3-5				
<b>Chair</b>	PE	April Baugh	<a href="mailto:april.ahosheit@gmail.com">april.ahosheit@gmail.com</a>	Dodge City USD 443
	ELA	Heather Sazama	<a href="mailto:hsazama@usd313.org">hsazama@usd313.org</a>	Buhler USD 313
	Music	Jennifer Donovan	<a href="mailto:jdonovan@usd232.org">jdonovan@usd232.org</a>	DeSoto USD 232
	Science	Erica Carlson	<a href="mailto:ecarlson@usd396.net">ecarlson@usd396.net</a>	Douglass USD 396
	Science	Marcia Mueller	<a href="mailto:mmueller@usd440.com">mmueller@usd440.com</a>	Halstead USD 440
	Math	Kristy Oborny	<a href="mailto:koborny@usd489.com">koborny@usd489.com</a>	Hays USD 489
	Instructional Support	Kristi Link	<a href="mailto:linkk@usd308.com">linkk@usd308.com</a>	Hutchinson USD 308
	Music	Kristin Shuck	<a href="mailto:kristiann2003@gmail.com">kristiann2003@gmail.com</a>	Kansas City USD 500
	Art	Mary Ure	<a href="mailto:mary_ure@usd368.org">mary_ure@usd368.org</a>	Paola USD 368
	Math	Signe Cook	<a href="mailto:signe.cook@usd428.net">signe.cook@usd428.net</a>	Great Bend USD 428
	SPED	Naomi Dinkel	<a href="mailto:nrdinkel@usd432.org">nrdinkel@usd432.org</a>	Victoria USD 432
	SPED	Louise Blanding	<a href="mailto:lblanding@usd327.org">lblanding@usd327.org</a>	Ellsworth USD 327
	Tech	Tara Ruder	<a href="mailto:truder3@usd259.net">truder3@usd259.net</a>	Wichita USD 259
	ESL	Devon Tschumakow	<a href="mailto:devon.tschumakow@kckps.org">devon.tschumakow@kckps.org</a>	Kansas City USD 500
	Counselor	Robin Butler	<a href="mailto:butlerr@usd320.com">butlerr@usd320.com</a>	Wamego USD 320
	Counselor	Dr. Jessica Lane	<a href="mailto:jjj3636@ksu.edu">jjj3636@ksu.edu</a>	KSU
	Library Media	Andy Schafer	<a href="mailto:andy.schafer@ks.gov">andy.schafer@ks.gov</a>	State Library
	Principal	Deena Hilbig	<a href="mailto:deena.hilbig@usd305.com">deena.hilbig@usd305.com</a>	Salina USD 305
	Supt	Jamie Rumford	<a href="mailto:jrumford@usd466.org">jrumford@usd466.org</a>	Scott City USD 466
	Curric Director	Brent Yeager	<a href="mailto:byeagerec@olatheschools.org">byeagerec@olatheschools.org</a>	Olathe USD 233
	KSDE	Cindy Hadicke	<a href="mailto:chadicke@ksde.org">chadicke@ksde.org</a>	KSDE
	Parent Engagement	Tamara Huff	<a href="mailto:thuff@usd259.net">thuff@usd259.net</a>	
	BOE	Shannon Kimball	<a href="mailto:skimball@usd497.org">skimball@usd497.org</a>	Lawrence USD 497
	Service Center	Doug Anderson	<a href="mailto:danderson@keystonelearning.org">danderson@keystonelearning.org</a>	Keystone
	State Board	Deena Horst	<a href="mailto:dhorst@ksde.org">dhorst@ksde.org</a>	KSBE

# Implementation Team

6-8				
Chair	SS	Keil Hileman	<a href="mailto:keilh@usd232.org">keilh@usd232.org</a>	DeSoto USD 232
	Science	Andrea Arnoldy	<a href="mailto:arnoldy.andreas@gmail.com">arnoldy.andreas@gmail.com</a>	Colby USD 315
	ELA	Megan Kohlman	<a href="mailto:megan.kohlman@usd460.org">megan.kohlman@usd460.org</a>	Hesston USD 460
	ELA	Daniel Dawson	<a href="mailto:ddawson@usd405.com">ddawson@usd405.com</a>	Lyons USD 405
	ELA	Kendra Preston	<a href="mailto:kpreston@usd232.org">kpreston@usd232.org</a>	DeSoto USD 232
	Science	Melanie Falcon	<a href="mailto:mfalcon@smokyvalley.org">mfalcon@smokyvalley.org</a>	Smoky Valley 400
	Science	Lucinda Crenshaw	<a href="mailto:fireweedlc@yahoo.com">fireweedlc@yahoo.com</a>	Lawrence (Ottawa USD 290)
	Math	Kristi Bruce	<a href="mailto:brucekri@usd437.net">brucekri@usd437.net</a>	Auburn Washburn USD 437
	Tech	Megan Nagel	<a href="mailto:megan.nagel@usd373.org">megan.nagel@usd373.org</a>	Newton USD 373
	SPED	Tamra Hill	<a href="mailto:thall@usd259.net">thall@usd259.net</a>	Wichita USD 259
	Art	Ann Marie Morris	<a href="mailto:annmarie.morris@usd305.com">annmarie.morris@usd305.com</a>	Salina USD 305
	CTE	Tammy Clark	<a href="mailto:tclark@knusd331.com">tclark@knusd331.com</a>	Kingman USD 331
	SPED	Carrie Andrade	<a href="mailto:carriea@usd383.org">carriea@usd383.org</a>	Manhattan USD 383
	Music	Caleb Mundt	<a href="mailto:mundtc@usd300ks.com">mundtc@usd300ks.com</a>	Coldwater USD 300
	Counselor	Kristin Wright	<a href="mailto:kristinwright@usd379.org">kristinwright@usd379.org</a>	Clay Center USD 379
	Counselor	Darcy Keefe	<a href="mailto:dkeeffe@usd420.org">dkeeffe@usd420.org</a>	Osage City USD 420
	Library Media	Meredith Little	<a href="mailto:meredithlittle@smsd.org">meredithlittle@smsd.org</a>	Shawnee Mission USD 52
	Principal	Casey Seyfert	<a href="mailto:cseyfert@usd273.org">cseyfert@usd273.org</a>	Beloit USD 273
	Supt	Darrel Kohlman	<a href="mailto:dkohlman@usd115.org">dkohlman@usd115.org</a>	Nemaha Central USD 115
	Curric Director	Kelly Gentry	<a href="mailto:kgentry@cgrove417.org">kgentry@cgrove417.org</a>	Morris County USD 417
	KSDE	Joann McRel	<a href="mailto:jmcrell@ksde.org">jmcrell@ksde.org</a>	KSDE
	Parent Engagement	Rachel Willis	<a href="mailto:rachwill@gmail.com">rachwill@gmail.com</a>	
	BOE	Brad Bergsma	<a href="mailto:brad.bergsma@nwktc.edu">brad.bergsma@nwktc.edu</a>	Goodland USD 352
	Service Center	John Girodat	<a href="mailto:JohnGirodat@smokyhill.org">JohnGirodat@smokyhill.org</a>	Smoky Hill USD 302
	State Board	Kathy Busch	<a href="mailto:kbusch@ksde.org">kbusch@ksde.org</a>	KSBE



# Implementation Team

9-12				
<b>Chair</b>	SS	Nathan McAlister	<a href="mailto:nmcalister@usd345.com">nmcalister@usd345.com</a>	Seaman USD 345
	ELA	Wayne Greenlee	<a href="mailto:wgreenlee@usd360.com">wgreenlee@usd360.com</a>	Caldwell USD 360
	ELA	Lori Stratton	<a href="mailto:strattonl@usd231.com">strattonl@usd231.com</a>	Gardner Edgerton USD 231
	Librarian	Rachel Yoder	<a href="mailto:rachel.yoder@usd460.org">rachel.yoder@usd460.org</a>	Hesston USD 460
	ELA	Amanda Buethe	<a href="mailto:amanda.buethe@usd303.org">amanda.buethe@usd303.org</a>	Ness City USD 303
	ELA	Angie Powers	<a href="mailto:angierpowers@gmail.com">angierpowers@gmail.com</a>	Olathe USD 233
	FL	Nathan Herrman	<a href="mailto:nherrman14@gmail.com">nherrman14@gmail.com</a>	Geary Co. USD 475
	Math	Cherryl Delacruz	<a href="mailto:cdelacruz@tps501.org">cdelacruz@tps501.org</a>	Topeka USD 501
	Math	Michelle Laubenstein	<a href="mailto:michelle.laubenstein@usd234.org">michelle.laubenstein@usd234.org</a>	Fort Scott USD 234
	Science	Stanley Bergkamp	<a href="mailto:sbergkamp@usd266.com">sbergkamp@usd266.com</a>	Maize USD 266
	Science	Teresa Riedinger	<a href="mailto:riedinger@eldoradoschools.org">riedinger@eldoradoschools.org</a>	El Dorado USD 490
	Science	Angie Sparks	<a href="mailto:asparks@usd246.com">asparks@usd246.com</a>	Northeast USD 246
	SS	Shawn Hornungs	<a href="mailto:hornungs@usd320.com">hornungs@usd320.com</a>	Wamego USD 320
	Tech	Alex Hirbe	<a href="mailto:ahirbe@usd458.org">ahirbe@usd458.org</a>	Basehor-Linwood USD 458
	CTE	Kelly Hoelting	<a href="mailto:khoelting@mv330.org">khoelting@mv330.org</a>	Mission Valley USD 330
	SPED	Fallon Votipka	<a href="mailto:fvotipka@usd108.org">fvotipka@usd108.org</a>	Washington Co. USD 108
	SPED	Nathanael Norman	<a href="mailto:nnormal@keystonelearning.org">nnormal@keystonelearning.org</a>	
	Counselor	Melanie Scott	<a href="mailto:scott.melanie@usd443.org">scott.melanie@usd443.org</a>	Dodge City USD 443
	Counselor	Amy Wells	<a href="mailto:wellsa@usd416.org">wellsa@usd416.org</a>	Louisburg USD 416
	PE	Jeff Brull	<a href="mailto:brull.jeff@usd443.org">brull.jeff@usd443.org</a>	Dodge City USD 443
	Music	Amy Ives	<a href="mailto:amy.ives@usd373.org">amy.ives@usd373.org</a>	Newton USD 373
	Art	Michal Austin	<a href="mailto:m.austin@usd492.org">m.austin@usd492.org</a>	Flint Hills USD 492
	Library Media	Samantha Warren	<a href="mailto:swarren@usd250.org">swarren@usd250.org</a>	Pittsburg USD 250
	Principal	Kelynn Heardt	<a href="mailto:kheardt@usd250.org">kheardt@usd250.org</a>	Pittsburg USD 250
	Supt	Mike Fulton	<a href="mailto:mikefulton@smsd.org">mikefulton@smsd.org</a>	SMSD USD 512
	Curric Director	Shana Dinkel	<a href="mailto:sdinkel@usd489.com">sdinkel@usd489.com</a>	Hays USD 489
	KSDE	Jay Scott	<a href="mailto:jscott@ksde.org">jscott@ksde.org</a>	KSDE
	Parent Engagement	Lusia Requenes	<a href="mailto:lusia.requenes@kckps.org">lusia.requenes@kckps.org</a>	
	BOE	Norm Wilks	<a href="mailto:nwilks@cox.net">nwilks@cox.net</a>	El Dorado USD 490
	Service Center	Chris Moddelmogg	<a href="mailto:chrismoddelmogg@smokyhill.org">chrismoddelmogg@smokyhill.org</a>	Smoky Hill USD 302
	State Board	Michelle Dombrosky	<a href="mailto:mdombrosky@ksde.org">mdombrosky@ksde.org</a>	KSBE
	Legislator	Renee Erickson	<a href="mailto:renee.erickson@house.ks.gov">renee.erickson@house.ks.gov</a> ; <a href="mailto:ericksonrenee62@gmail.com">ericksonrenee62@gmail.com</a>	Kansas Legislature

# Operations Team

	Position	Name	Email	District
<b>Co-Chair</b>	Superintendent	Frank Harwood	<a href="mailto:fharwood@ud232.org">fharwood@ud232.org</a>	USD 232
<b>Co-Chair</b>	KDHE	Ashley Goss	<a href="mailto:ashley.goss@ks.gov">ashley.goss@ks.gov</a>	KDHE
	Superintendent	Dan Brungardt	<a href="mailto:brungardtd@usd204.net">brungardtd@usd204.net</a>	Bonner Springs USD 204
	Superintendent	Linn Exline	<a href="mailto:Linn.Exline@usd305.com">Linn.Exline@usd305.com</a>	Salina USD 305
	Executive Director	Eric Punswick	<a href="mailto:EJPunswick@bluevalleyk12.org">EJPunswick@bluevalleyk12.org</a>	Blue Valley USD 229
	Superintendent	Craig Correll	<a href="mailto:correllc@usd445.org">correllc@usd445.org</a>	Coffeyville USD 445
	Principal	Lance Custer	<a href="mailto:lcuster@usd219.org">lcuster@usd219.org</a>	Minneola USD 219
	Vice Principal	Ron James	<a href="mailto:rjames@usd493.com">rjames@usd493.com</a>	Columbus USD 493
	Superintendent	Ron Berry	<a href="mailto:rbarry@usd440.com">rbarry@usd440.com</a>	Halstead USD 440
	Assistant Principal	Ann Gorsuch	<a href="mailto:agorsuch@tps501.org">agorsuch@tps501.org</a>	Topeka USD 501
	Assistant Superintendent	David Schmidt	<a href="mailto:david.schmidt@usd382.com">david.schmidt@usd382.com</a>	Pratt USD 382
	Assistant Superintendent	Rick Kraus	<a href="mailto:krausr@usd308.com">krausr@usd308.com</a>	Hutchinson USD 408
	Assistant Superintendent	Hollie Becker	<a href="mailto:hollie.becker@usd469.net">hollie.becker@usd469.net</a>	Lansing USD 469
	Superintendent	Cherie Nicholson	<a href="mailto:cnicholson@usd431.net">cnicholson@usd431.net</a>	Hoisington USD 431
	Superintendent	Brian Smith	<a href="mailto:bsmith@usd493.com">bsmith@usd493.com</a>	Columbus USD 493
	Teacher	Michelle Wheeler	<a href="mailto:mcasey@usd250.org">mcasey@usd250.org</a>	Pittsburg USD 250
	Teacher	Dawn Gresham	<a href="mailto:dgresham88@gmail.com">dgresham88@gmail.com</a>	
	Teacher	Melynda Kaifes	<a href="mailto:MKaifes@usd232.org">MKaifes@usd232.org</a>	DeSoto USD 232
	Teacher	Faye Wells	<a href="mailto:WELLS.FAYE@usd443.org">WELLS.FAYE@usd443.org</a>	Dodge City USD 443
	Teacher	Teresa Louderback	<a href="mailto:teresa.louderback@usd480.net">teresa.louderback@usd480.net</a>	Liberal USD 480
	Teacher	Rebecca Eason	<a href="mailto:reason@usd261.com">reason@usd261.com</a>	Haysville USD 261
	Teacher	Shari Hatfield	<a href="mailto:shatfield@usd205.com">shatfield@usd205.com</a>	Bluestem USD 205
	Teacher	Doug Berryman	<a href="mailto:dberryman@usd261.com">dberryman@usd261.com</a>	Haysville USD 261
	Teacher	Elizabeth Mlotkiewicz	<a href="mailto:emlotkiewicz@usd259.net">emlotkiewicz@usd259.net</a>	Wichita UD 259
	Teacher	Casey Ewy	<a href="mailto:CASEYE@usd383.org">CASEYE@usd383.org</a>	Manhattan USD 383
	Teacher	Stacy Wall	<a href="mailto:stacy00_04@yahoo.com">stacy00_04@yahoo.com</a>	Seaman USD 345
	Teacher	Lori Kutilek	<a href="mailto:lkutilek@usd268.org">lkutilek@usd268.org</a>	Cheney USD 268
	Teacher	Sharon Mueller	<a href="mailto:scmueller1@gmail.com">scmueller1@gmail.com</a>	Leavenworth USD 453
	Teacher	Jason Coats	<a href="mailto:jason@kkpsi.org">jason@kkpsi.org</a>	Shawnee Mission USD 512
	Teacher	Daniel Klaassen	<a href="mailto:klaassendan@gmail.com">klaassendan@gmail.com</a>	Kaw Valley USD 321
	Teacher	Lynette Krieger-Zook	<a href="mailto:kriegzook@gmail.com">kriegzook@gmail.com</a>	Hutchinson USD 408
	Teacher	Tasha Markham	<a href="mailto:tmarkham03@gmail.com">tmarkham03@gmail.com</a>	Fredonia USD 484

# Operations Team

Teacher	Lynette Wescott	<a href="mailto:lwescott@usd250.org">lwescott@usd250.org</a>	Pittsburg USD 250
Teacher	Samantha Moran	<a href="mailto:smoran88@live.com">smoran88@live.com</a>	Salina USD 305
Teacher	Kim Hett	<a href="mailto:hettki@gmail.com">hettki@gmail.com</a>	Andover USD 385
Teacher	Jason Meyer	<a href="mailto:jmeyer1781@gmail.com">jmeyer1781@gmail.com</a>	Topeka USD 501
Nutrition	Jessica Younker	<a href="mailto:jyounker@usd489.com">jyounker@usd489.com</a>	Hays USD 489
Nutrition	Meghan Bernard	<a href="mailto:mebarnard@usd266.com">mebarnard@usd266.com</a>	Maize USD 266
Nutrition	Connie Kimzey	<a href="mailto:ckimzey@usd247.com">ckimzey@usd247.com</a>	Cherokee USD 247
Nutrition	Nancy Coughenour	<a href="mailto:nancycoughenour@smsd.org">nancycoughenour@smsd.org</a>	Shawnee Mission USD 512
Nutrition	Julie Henry	<a href="mailto:jahenry@ksde.org">jahenry@ksde.org</a>	KSDE
Nutrition	Cheryl Johnson	<a href="mailto:csjohnson@ksde.org">csjohnson@ksde.org</a>	KSDE
Facilities	Doug Key	<a href="mailto:DKey@piperschools.com">DKey@piperschools.com</a>	Piper USD 203
Facilities	Kathy Robertson	<a href="mailto:karobertson@eldoradoschools.org">karobertson@eldoradoschools.org</a>	El Dorado USD 490
Facilities	Rich Jones	<a href="mailto:jonesric@usd437.net">jonesric@usd437.net</a>	Auburn Washburn USD 437
Transportation	Mike Lopez	<a href="mailto:lopezmic@usd437.net">lopezmic@usd437.net</a>	Auburn Washburn USD 437
Transportation	Mike Urban	<a href="mailto:mikeurban@usd379.org">mikeurban@usd379.org</a>	Clay Center USD 379
Transportation	Charlie Stillian	<a href="mailto:cstillian@gckschools.com">cstillian@gckschools.com</a>	Garden City USD 457
Nurse	Jessica Morel	<a href="mailto:jmorel@smokyvalley.org">jmorel@smokyvalley.org</a>	Smoky Valley USD 400
Nurse	Lesley Thomas	<a href="mailto:lethomas@usd261.com">lethomas@usd261.com</a>	Haysville USD 261
Nurse	Shelby Rebeck	<a href="mailto:shelbyrebeck@smsd.org">shelbyrebeck@smsd.org</a>	Shawnee Mission USD 512
Nurse	Kimber Kasitz	<a href="mailto:kkasitz@usd259.org">kkasitz@usd259.org</a>	Wichita UD 259
Nurse	Sharon Morris	<a href="mailto:samorris@olatheschools.org">samorris@olatheschools.org</a>	Olathe USD 233
Other	Shelly Harden	<a href="mailto:hardenrochelle@icloud.com">hardenrochelle@icloud.com</a>	AuD CCC-A
Other	<a href="#">Scott Gregory</a>	<a href="mailto:sfgregory@fhsu.edu">sfgregory@fhsu.edu</a>	Fort Hays State University
Other	Susan McMahan	<a href="mailto:smcmahan@wycokck.org">smcmahan@wycokck.org</a>	Wyandotte Emergency Management
Board Clerk	Paula Chapin	<a href="mailto:pchapin@thunderhawks.org">pchapin@thunderhawks.org</a>	Wheatland USD 292
Board Clerk	Shawna Thacker	<a href="mailto:shawnat@usd381.org">shawnat@usd381.org</a>	Spearville USD 381
Board Clerk	Gina Shelton	<a href="mailto:gina.shelton@usd234.org">gina.shelton@usd234.org</a>	Fort Scott USD 234
Board Clerk	Lori Campbell	<a href="mailto:lcampbell@silverlakeschools.org">lcampbell@silverlakeschools.org</a>	Silver Lake USD 372
Board Clerk	Makenzi Logsdon	<a href="mailto:mlogsdon@usd268.org">mlogsdon@usd268.org</a>	Cheney USD 268
Board Clerk	Tracey Moerer	<a href="mailto:tmoerer@usd244ks.org">tmoerer@usd244ks.org</a>	Burlington USD 244
State Board of Education	Janet Waugh	<a href="mailto:jwaugh@ksde.org">jwaugh@ksde.org</a>	KSBE, District 1
State Board of Education	Ann Mah	<a href="mailto:amah@ksde.org">amah@ksde.org</a>	KSBE, District 4
State Board of Education	Jim Porter	<a href="mailto:jporter@ksde.org">jporter@ksde.org</a>	KSBE, District 9
Local Board of Education	Tracy Hannah	<a href="mailto:Tracey.Hannah@hallmark.com">Tracey.Hannah@hallmark.com</a>	Bashor-Linwood USD 458
Local Board of Education	Greg Tice	<a href="mailto:gt@sptarchitecture.com">gt@sptarchitecture.com</a>	Renwick USD 267
Local Board of Education	Kevin Cole	<a href="mailto:kcole@usd506.org">kcole@usd506.org</a>	Labette County USD 506
County Health Official	Angela Sowers	<a href="mailto:asowers@fordcounty.net">asowers@fordcounty.net</a>	Ford
County Health Official	Dr. Joe LeMaster	<a href="mailto:joe.LeMaster@jocogov.org">joe.LeMaster@jocogov.org</a>	Johnson
County Health Official	Jamie Miller	<a href="mailto:jmiller@leavenworthcounty.gov">jmiller@leavenworthcounty.gov</a>	Leavenworth



# Operations Team

	County Health Official	Dusty Nichols	<a href="mailto:Dustin.Nichols@snco.us">Dustin.Nichols@snco.us</a>	Shawnee
	County Health Official	Dr. Allen Greiner	<a href="mailto:agreiner@kumc.edu">agreiner@kumc.edu</a>	Wyandotte
	County Health Official	Dr. Erin Corriveau	<a href="mailto:ecorriveau@kumc.edu">ecorriveau@kumc.edu</a>	Wyandotte
	KDHE	Rachel Sisson	<a href="mailto:Rachel.Sisson@ks.gov">Rachel.Sisson@ks.gov</a>	KDHE
	KDHE	Mary Murphy	<a href="mailto:Mary.Murphy@ks.gov">Mary.Murphy@ks.gov</a>	KDHE
	KDHE	Ryan Lester	<a href="mailto:Ryan.Lester@ks.gov">Ryan.Lester@ks.gov</a>	KDHE
	Director	Craig Neuenswander	<a href="mailto:cneuenswander@ksde.org">cneuenswander@ksde.org</a>	KSDE
	COVID Lead	Mark Thompson	<a href="mailto:mathompson@ksde.org">mathompson@ksde.org</a>	KSDE
	Deputy Commissioner	Brad Neuenswander	<a href="mailto:bneuenswander@ksde.org">bneuenswander@ksde.org</a>	KSDE
	Administrative Assistant	Sherry Root	<a href="mailto:sroot@ksde.org">sroot@ksde.org</a>	KSDE